



CITY OF LEWES



S M T W T F S

S M T W T F S

S M T W T F S

APRIL 2013						
	1	2	3	4	5	6
7	8	9	10	11	12	13
14	15	16	17	18	19	20
21	20	21	24	25	26	27
28	29	30				

MAY 2013						
			1	2	3	4
5	6	7	8	9	10	11
12	13	14	15	16	17	18
19	20	21	22	23	24	25
26	27 *	28	29	30	31	

JUNE 2013						
						1
2	3	4	5	6	7	8
9	10	11	12	13	14	15
16	17	18	19	20	21	22
22	24	25	26	27	28	29
30						

JULY 2013						
	1	2	3	4 *	5	6
7	8	9	10	11	12	13
14	15	16	17	18	19	20
21	22	23	24	25	26	27
28	29	30	31			

AUGUST 2013						
				1	2	3
4	5	6	7	8	9	10
11	12	13	14	15	16	17
18	19	20	21	22	23	24
25	26	27	28	29	30	31

SEPTEMBER 2013						
1	2 *	3	4	5	6	7
8	9	10	11	12	13	14
15	16	17	18	19	20	21
22	23	24	25	26	27	28
29	30					

OCTOBER 2013						
		1	2	3	4	5
6	7	8	9	10	11	12
13	14*	15	16	17	18	19
20	21	22	23	24	25	26
27	28	29	30	31		

NOVEMBER 2013						
				1	2	
3	4	5 *	6	7	8	9
10	11*	12	13	14	15	16
17	18	19	20	21*	22*	23
24	25	26	27	28	29	30

DECEMBER 2013						
1	2	3	4	5	6	7
8	9	10	11	12	13	14
15	16	17	18	19	20	21
22	23	24	25*	26	27	28
29	30	31				

JANUARY 2014						
			1 *	2	3	4
5	6	7	8	9	10	11
12	13	14	15	16	17	18
19	20*	21	22	23	24	25
26	27	28	29	30	31	

FEBRUARY 2014						
						1
2	3	4	5	6	7	8
9	10	11	12	13	14	15
16	17*	18	19	20	21	22
23	24	25	26	27	28	

MARCH 2014						
						1
2	3	4	5	6	7	8
9	10	11	12	13	14	15
16	17	18	19	20	21	22
23	24	25	26	27	28	29
30	31					

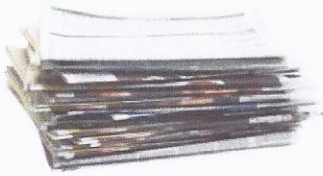
● - Trash Pick Up ▲ - Recycle Pick Up A* ▲ - Recycle Pick Up B* ■ - Yard Waste Pick Up * - City Observed Holiday
 Call City Hall (302) 645-7777 if you are unsure of your recycle pick-up day

**Yard waste items to be deposited into containers clearly marked "Yard waste",
 bundled in 4 foot lengths or placed in bag(s) weighing 50 pounds or less:**

- Grass trimmings
- Leaves
- Prunings
- Brush
- Shrubby
- Garden material
- Undecorated Christmas trees
- Tree limbs up to 4" in diameter
- Plant bedding
- Twigs



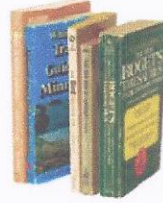
Recycle these



Newspapers



Junk mail



Paperback books



Boxboard (cereal boxes)



Pizza boxes (empty)
(no food residue)



Corrugated cardboard



Telephone books



Office paper



Rigid plastic



Yogurt and butter containers



Plastic bottles/jugs



Plastic grocery bags
(combine bags into one)



Glass bottles/jars



Aluminum and steel / tin cans



www.recycling.delaware.gov

Not Accepted

Keep these items out of your recycling cart or container:

- Styrofoam
- Motor oil containers
- Chemical containers
- Ceramics or dishes
- Lightbulbs
- Window glass and mirrors
- Yard waste
- Food waste
- Televisions and computers
- Monitors